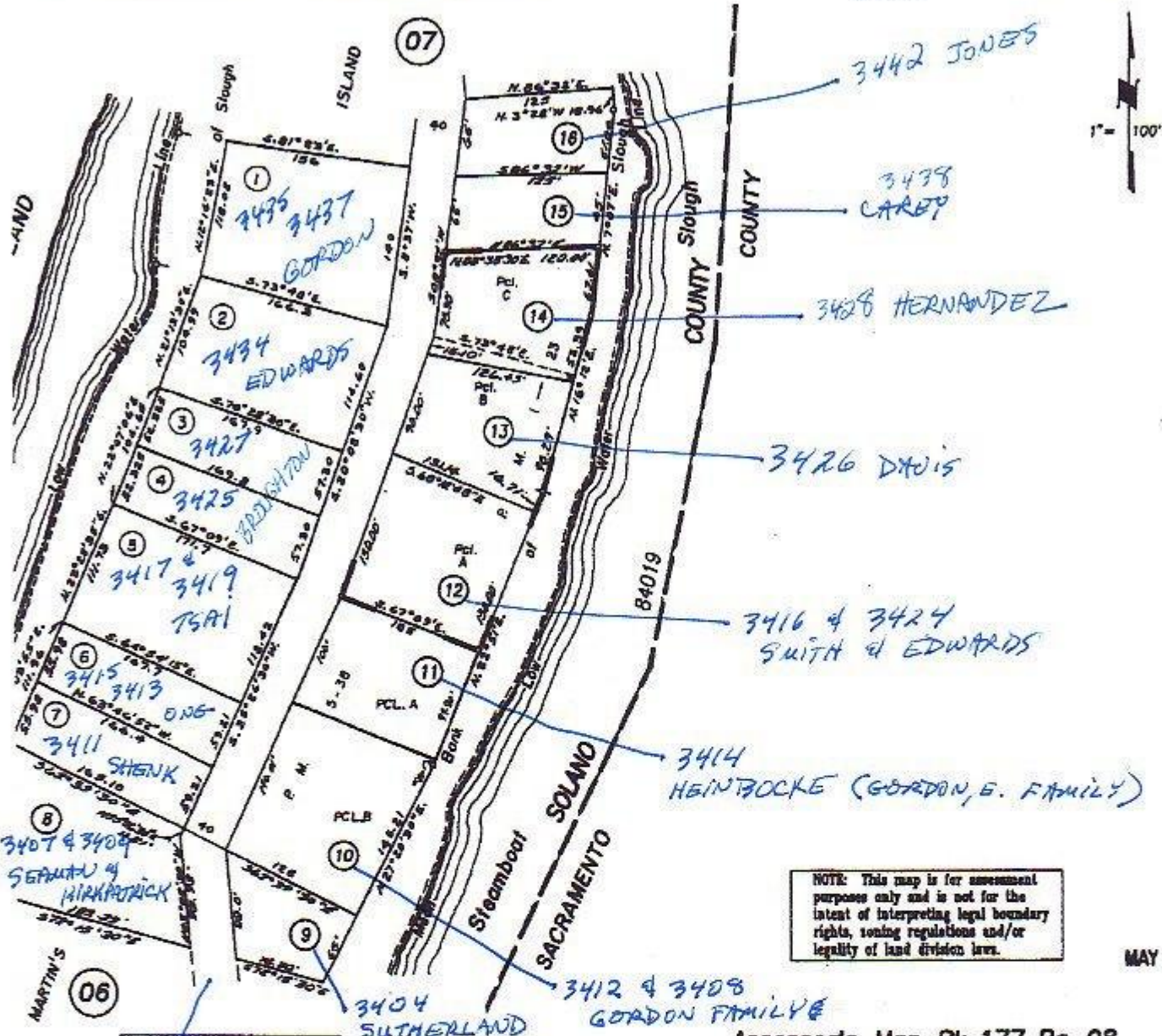


SLUG HARBOR DAINES ADDRESSES & NEIGHBORS 2007
FROM TAX ASSESSORS' DATABASE ONLINE

S. 1/2 SEC. 11, T.4N., R.3E., M.D.B.&M.

Tax Area Code
84019

177-08



NOTE: This map is for assessment purposes only and is not for the intent of interpreting legal boundary rights, zoning regulations and/or legality of land division laws.

MAY 17 2005

REVISION	DATE	BY
S.B.E. 05-007	2-14-05	SC
Revised from Bk48	12-31-02	FS

NOTE: Assessor's Block Numbers Shown in Ellipses
Assessor's Parcel Numbers Shown in Circles

Assessor's Map Bk. 177 Pg. 08
County of Solano, Calif.

05-08

Copyright © 1996, Solano County Assessor/Recorder, All rights Reserved

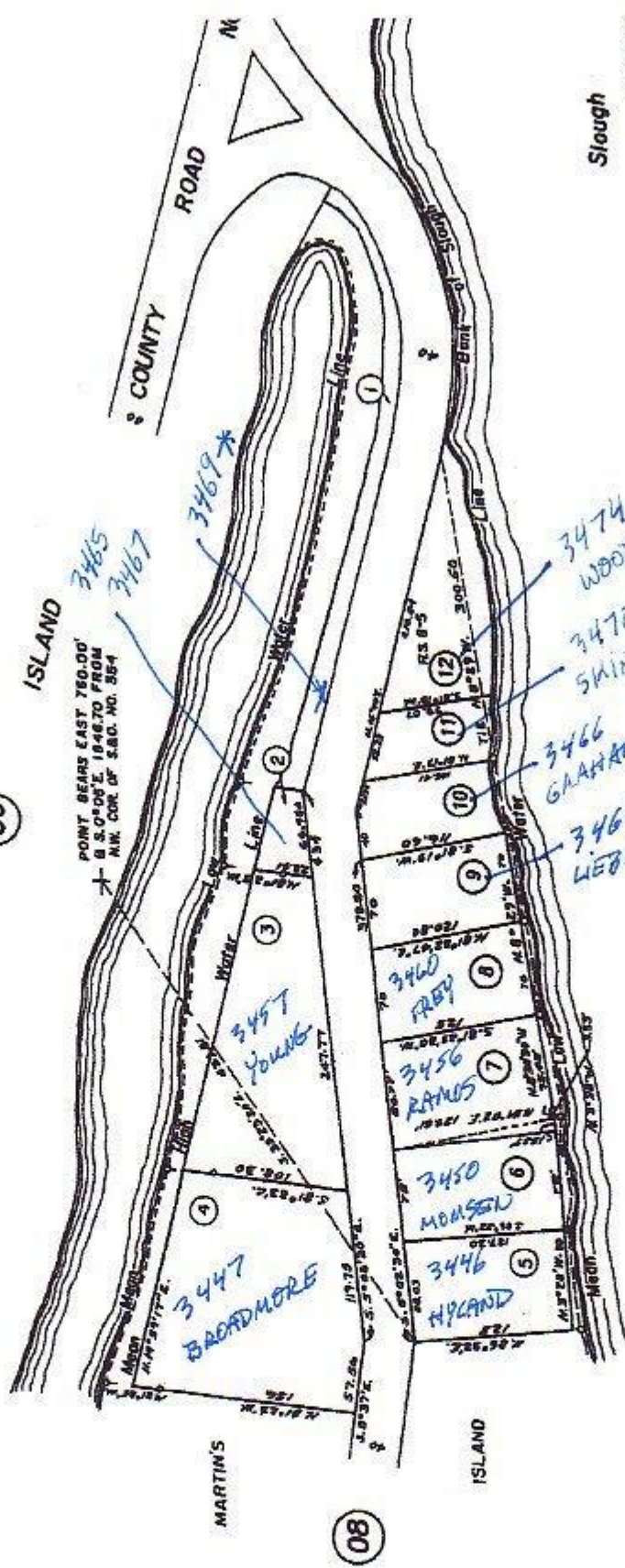
RESORT PARCEL - 3356 SHD

FOR. S.1/2 SEC. 11, T.4N., R.3E., M.D.B.&M.

Tax Area Code
84019

RYER

06



Slough

COUNT
COUNT

84019

SOLANO

SACRAMENTO

NOTE: This map is for assessment purposes only and is not for the intent of interpreting legal boundary rights, zoning regulations and/or legality of land division laws.

REVISION	DATE	BY
S.B.E. 05-007	2-14-05	SE
Revised from BM48	12-31-02	FG

NOTE: Assessor's Block Numbers Shown in Ellipses
Assessor's Parcel Numbers Shown in Circles

Assessor's Map Bk.
County of Solano

05-06

Copyright © 1996, Solano County Assessor